

# Arkwright

SCHOLARSHIPS

Inspiring Future Leaders in Engineering



## Schools' Brochure

Academic Year 2011/12

For Engineering Scholarships to be awarded September 2012



# The Arkwright Scholarships Trust offers Engineering Scholarships to encourage and inspire high calibre Year 11/S4 students to pursue a career in engineering and related areas of design

Named after the innovative engineer Sir Richard Arkwright, the 'father' of the factory system, Arkwright Engineering Scholarships work.

Our case studies show the excellent exam results achieved by Arkwright Scholars and the enviable career progress they have made over the twenty years of our existence. In that time we have awarded over 2,350 Scholarships.

Starting in 2011, we are also able to offer a number of Undergraduate Scholarships to support a select group of existing Arkwright Scholars through university.

“ I have always rated Arkwright Scholarships highly. Scholars who apply to study at our College demonstrate a strong interest in the real world of engineering.”

David Robb, Mechanical Engineering Admissions Tutor, Imperial College

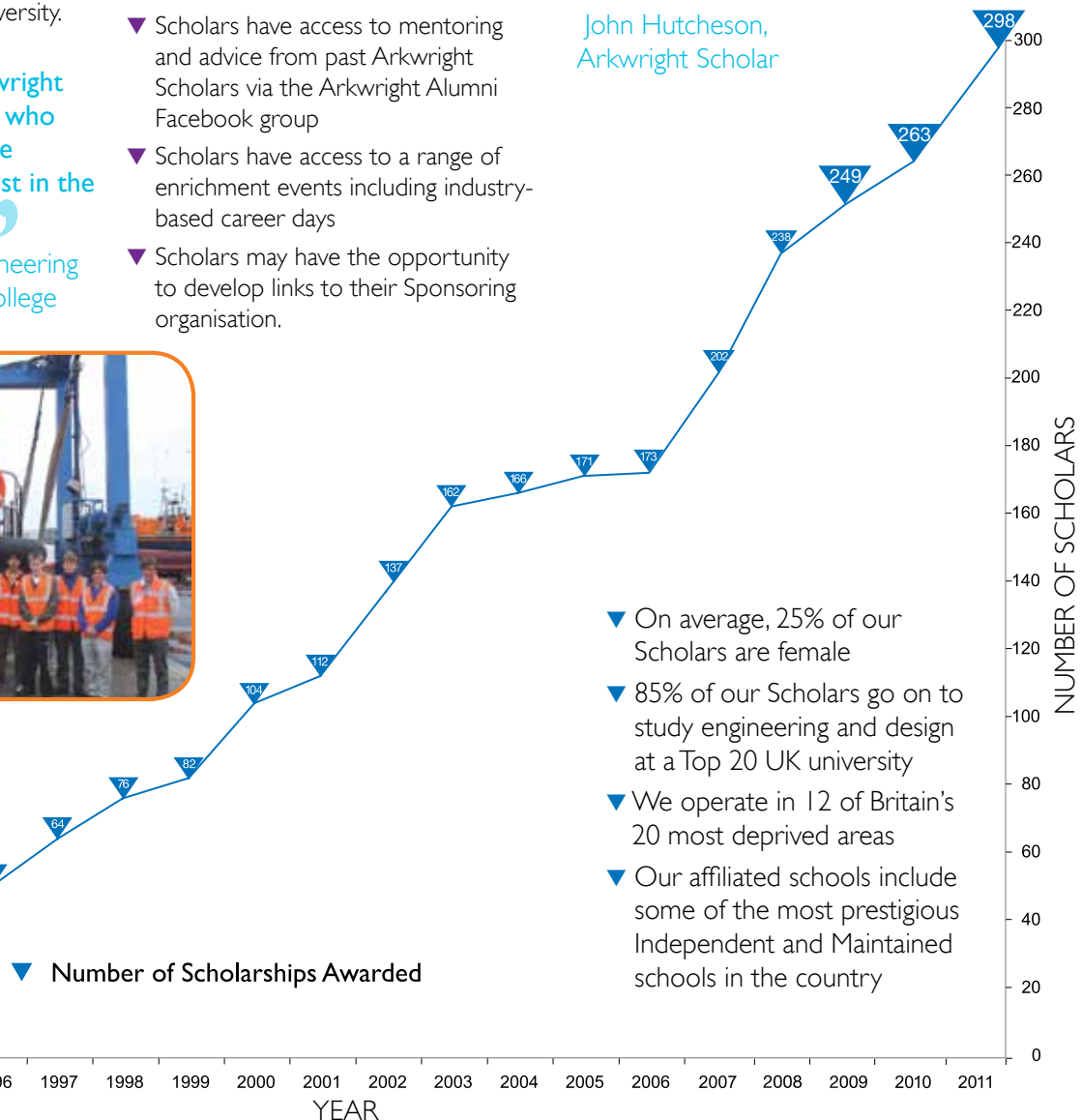
## THE BENEFITS

- ▼ The prestige of the Arkwright scheme provides schools with valuable marketing opportunities to prospective parents
- ▼ Arkwright Engineering Scholarships are widely respected by academia and industry, and enhance Scholars' CVs
- ▼ £400 financial award (over 2 years) to the school's Design and Technology or Technological Studies Department
- ▼ £600 financial award (over 2 years) to the Scholar, to help with the cost of materials and activities to optimise their studies
- ▼ Scholars have access to mentoring and advice from past Arkwright Scholars via the Arkwright Alumni Facebook group
- ▼ Scholars have access to a range of enrichment events including industry-based career days
- ▼ Scholars may have the opportunity to develop links to their Sponsoring organisation.



“ Thank you for the wonderful opportunity of an Arkwright Scholarship. I believe it played a big part in my getting an unconditional place at University. ”

John Hutcheson, Arkwright Scholar



- ▼ On average, 25% of our Scholars are female
- ▼ 85% of our Scholars go on to study engineering and design at a Top 20 UK university
- ▼ We operate in 12 of Britain's 20 most deprived areas
- ▼ Our affiliated schools include some of the most prestigious Independent and Maintained schools in the country

## WHO CAN APPLY FOR SCHOLARSHIPS?

- ▼ Your school/college must be affiliated to the Arkwright Scholarships Trust (this affiliation can occur in parallel to a student application)
- ▼ Applicants must be in year 11 (England and Wales) or S4 (Scotland) and about to take their GCSEs, Scottish Standards or equivalent examinations
- ▼ Applicants must be taking Design & Technology, Technology Studies, Engineering or related subjects
- ▼ Applicants should be planning to take A levels, Scottish Higher or equivalent examinations in subjects relevant to the study of engineering at university. Students are advised to refer to their preferred university for specific entry requirements
- ▼ Applicants must make a commitment to maths at AS and preferably A2 (England and Wales); Higher or Intermediate 2, preferably Advanced Higher (Scotland)
- ▼ Applicants must be actively considering a university degree and career in engineering or a related area of design.



## HOW TO AFFILIATE YOUR SCHOOL

### Your school should:

- ▼ have year 11/S4 students studying Design & Technology, Engineering, Technological Studies, or related subjects; or have feeder schools that offer these subjects
- ▼ have a Head Teacher who is a strong supporter of science, technology, engineering and maths (STEM) in the curriculum
- ▼ offer students opportunities to participate in STEM enrichment activities outside the curriculum
- ▼ actively encourage students to reach their maximum potential and to go on to university whenever possible.

Your school's initial interest should be registered by completing a pre-affiliation form available from:

[arkwright.org.uk/schools](http://arkwright.org.uk/schools)

For a no-commitment chat about our Scholarships, please contact us on: **01926 333210.**

## STUDENT APPLICATION PROCEDURE

- ▼ The application process starts in September each year. Applications are completed by the student with supporting statements from school staff. A small fee is charged for each student application
- ▼ Application forms must be received by the January deadline (check our website for the exact deadline date each year)

- ▼ Candidates must sit the two-hour Arkwright Aptitude Paper in early February. This encourages students to demonstrate their skills by producing innovative solutions to two engineering and design problems
- ▼ Candidates, shortlisted on the strength of their application form and Aptitude Paper result, are interviewed in March or April. Interviews are hosted by leading UK universities. Parents may attend, enabling them to learn more about careers in engineering and related areas of design
- ▼ Successful candidates are offered Scholarships in July
- ▼ Formal presentation of Scholarships is made at prestigious Awards Ceremonies in the autumn.

## MONITORING

- ▼ Scholars must complete a report at the end of each year so that Arkwright can monitor their progress. Schools are required to submit a report at the end of year 1.

## PRINCIPAL SPONSORS



Dulverton Trust



Emmott Foundation



## MAJOR SPONSORS



Balfour Beatty Construction



The Eranda Foundation



The Haberdashers' Company

The Hoppold Trust



The Mercers' Company

The Merchant Taylors' Company

S.F.I.A.  
Educational Trust Ltd

The Salters' Company



THALES

The Scientific Instrument Makers' Company

## CONTRIBUTING SPONSORS

The Adnams Charity  
Alcatel-Lucent Telecom Ltd  
Mrs S L Andrews  
Aptica Ltd  
ARM Ltd  
Association of Train Operating Companies  
Dr G Avison  
Mr N Barber  
Barcapel Foundation  
Baxi Commercial Division  
Mr D Beattie  
Dr & Mrs P Belfield  
The Bernard Sunley Charitable Foundation  
Bewley Charitable Trust  
Blundell's School  
Bosch Thermotechnology Ltd  
Bradfield College  
The Brian Mercer Charitable Trust  
Bristol Grammar School  
The British Institute of Non-Destructive Testing  
Mr B Brogan  
Cambridge Consultants Limited  
Canary Wharf Contractors Fund  
Ceteris  
The Chartered Institution of Building Services Engineers  
The Chartered Institution of Highways & Transportation Foundation  
Chelmsford Science and Engineering Society  
The Claire Hunter Charitable Trust  
Cobham Plc  
ConstructionSkills  
Costain Group Plc  
The Coutts Charitable Trust  
DG Marshall of Cambridge Trust  
Doncasters Ltd  
Doosan Power Systems Limited  
Dyers Company Charitable Trust  
Ecton Trust

Fläkt Woods Ltd  
The Founders' Company  
G M Morrison Charitable Trust  
Garfield Weston Foundation  
George Watson's College  
Geraldine Kirkpatrick Charitable Trust  
Goodrich Actuation Systems Limited  
Guided Ultrasonics Ltd  
Mr S M Haslam  
Hobart Laser Limited  
Hobhouse Memorial Trust  
The Hugh Fraser Foundation  
The Institution of Electronics  
The Institution of Structural Engineers Educational Trust  
JT H Charitable Trust  
John Jarrold Trust Ltd  
Joseph Strong Frazer Trust  
Mr E Kinder  
Mr R Kirkland  
The Kobler Trust  
KPMG LLP  
Lancaster University  
Learning Grid  
The Len Giles Trust  
Mrs V Lindsay  
Lockheed Martin UK Integrated Systems  
Loughborough University  
Mrs J McCaul  
McLaren Racing Ltd  
Meggitt PLC  
Merchiston Castle School  
Microsoft Research Ltd  
Microsoft UK  
The Minerals Engineering Society  
The Mining Institute of Scotland  
National Nuclear Laboratory  
NSG Group  
Mr & Mrs P Pavey  
Mr P Philipp  
Mr & Mrs M Phillips  
Pochin's plc

Radio Communications Foundation  
The Rainford Trust  
Rees Jeffreys Road Fund  
The Rochester Bridge Trust  
The Royal Aeronautical Society – Centennial Scholarship fund  
Royal Mail  
Sellafield Ltd  
The Simon Gibson Charitable Trust  
Sir James Knott Trust  
The Sir James Miller (Edinburgh) Trust  
Sir William Lyons Charitable Trust  
The Skelton Bounty  
Smiths Detection  
Society of Petroleum Engineers London  
The South Wales Institute of Engineering Educational Trust  
Specialist Schools & Academies Trust  
Spencer Ogden  
Stannah Lifts Group  
The Steel Charitable Trust  
Sylvia Aitken's Charitable Trust  
Thomas Gerald Gray Charitable Trust  
The Thompson Charitable Trust  
timNEXUS Ltd  
TonyBwlch Limited  
TWI  
Ultra Electronics  
Umeco plc  
The University of Greenwich  
The University of Sheffield  
The Val A Browning Foundation  
Dr G Vanstone FREng  
VEC Acorn Trust  
Whitaker Charitable Trust  
The William Leech Charity  
Mr Alan Williams, In Memory Of  
The Worshipful Company of Engineers  
The Worshipful Company of Fuellers  
The Worshipful Company of Paviers Livery Trust for Charities

## PARTNERS WE WORK WITH

The Design and Technology Association  
The Sir Henry Royce Memorial Foundation  
Input  
WISE – Women into Science, Engineering and Construction

Specialist Schools and Academies Trust  
Young Engineers  
The Year in Industry

Arkwright Scholarships Trust, Holly House, 74 Upper Holly Walk, Leamington Spa, Warwickshire, CV32 4JL  
Telephone 01926 333210, Facsimile 01926 333212, Email enquiries@arkwright.org.uk

arkwright.org.uk

Registered Charity No. 1091988 | Registered in England and Wales No. 4401993